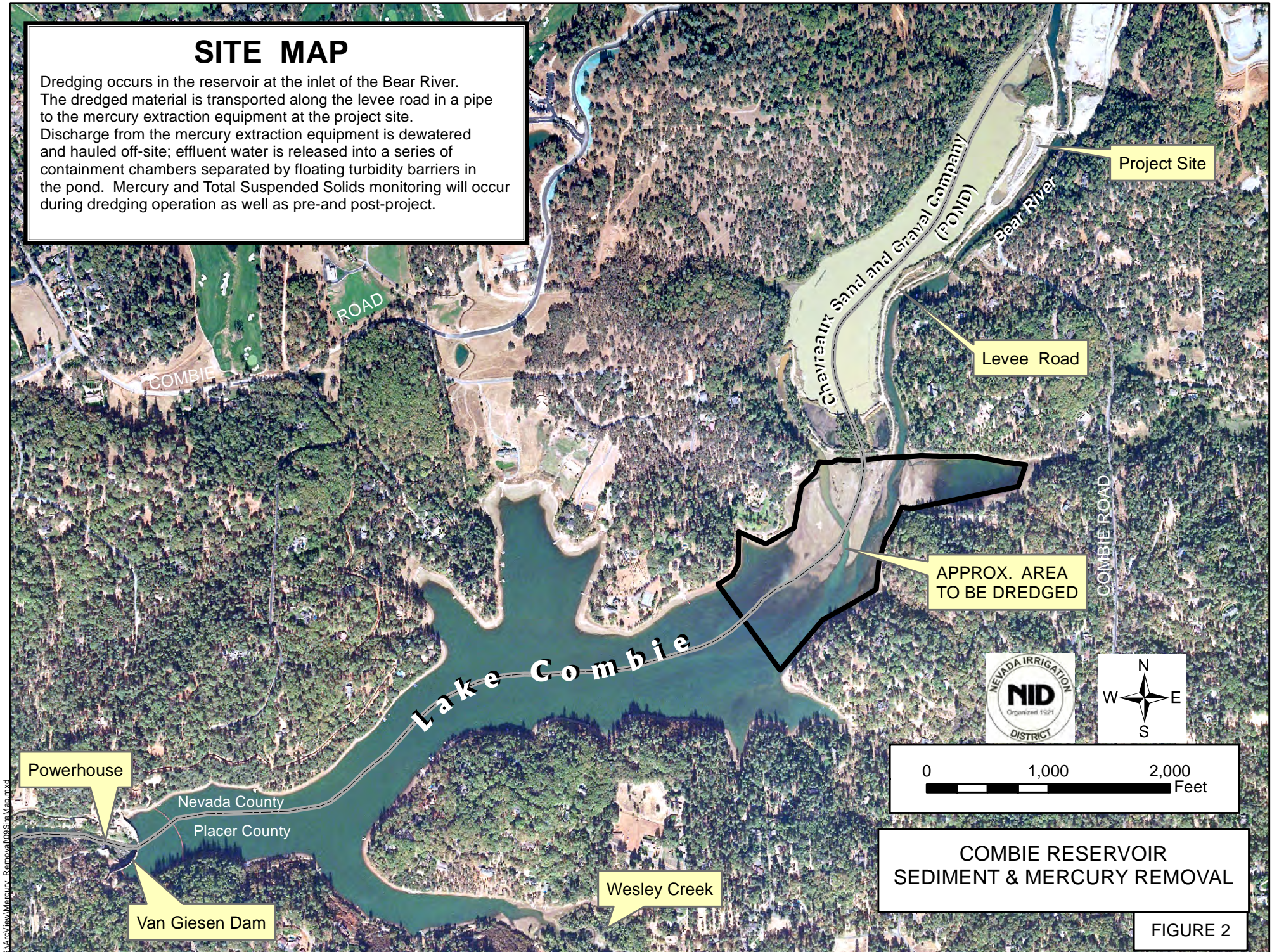


# SITE MAP

Dredging occurs in the reservoir at the inlet of the Bear River. The dredged material is transported along the levee road in a pipe to the mercury extraction equipment at the project site. Discharge from the mercury extraction equipment is dewatered and hauled off-site; effluent water is released into a series of containment chambers separated by floating turbidity barriers in the pond. Mercury and Total Suspended Solids monitoring will occur during dredging operation as well as pre-and post-project.



Project Site

Levee Road

APPROX. AREA TO BE DREDGED

Powerhouse

Van Giesen Dam

Wesley Creek



0 1,000 2,000 Feet

COMBIE RESERVOIR  
SEDIMENT & MERCURY REMOVAL

FIGURE 2

StateView/Mercury Removal/03SiteMap.aprx